



## TFT GRAPHIC DISPLAY MODULE DATASHEET



Datasheet Release Date 2023-06-07  
for

**CFAF240320A0-024SR**

### **Crystalfontz America, Inc.**

12412 East Saltese Avenue  
Spokane Valley, WA 99216-0357  
Phone: 888-206-9720  
Fax: 509-892-1203  
Email: [support@crystalfontz.com](mailto:support@crystalfontz.com)  
URL: [www.crystalfontz.com](http://www.crystalfontz.com)



## CONTENTS

1. General Information .....	3
2. Module Description .....	4
3. Features .....	4
4. Mechanical Data .....	4
5. Mechanical Drawing.....	5
6. Interface Pin Function.....	6
7. System Block Diagram.....	7
8. Absolute Maximum Ratings .....	7
9. Electrical Characteristics.....	8
10. Optical Characteristics .....	8
11. LED Backlight .....	8
11.1. LED Backlight Characteristics .....	8
11.2. LED Backlight Example Driver.....	9
12. LCD Module Precautions .....	10
12.1. Modules.....	10
12.2. Handling Precautions .....	10
12.3. Storing Precautions .....	10
12.4. Designing Precautions.....	11
12.5. Disposing Precautions.....	11
12.6. Other Precautions .....	11



## 1. General Information

### Datasheet Revision History

Datasheet Release: **2023-06-07**  
Datasheet for the CFAF240320A0-024SR TFT graphic display module.

### Product Change Notifications

You can check for or subscribe to [Part Change Notices](#) for this display module on our website.

### Variations

Slight variations between lots are normal (e.g., contrast, color, or intensity).

### Volatility

This display module has volatile memory.

### Disclaimer

Certain applications using CrystalFontz America, Inc. products may involve potential risks of death, personal injury, or severe property or environmental damage ("Critical Applications"). CRYSTALFONTZ AMERICA, INC. PRODUCTS ARE NOT DESIGNED, INTENDED, AUTHORIZED, OR WARRANTED TO BE SUITABLE FOR USE IN LIFE-SUPPORT APPLICATIONS, DEVICES OR SYSTEMS OR OTHER CRITICAL APPLICATIONS. Inclusion of CrystalFontz America, Inc. products in such applications is understood to be fully at the risk of the customer. In order to minimize risks associated with customer applications, adequate design and operating safeguards should be provided by the customer to minimize inherent or procedural hazard. Please contact us if you have any questions concerning potential risk applications.

CrystalFontz America, Inc. assumes no liability for applications assistance, customer product design, software performance, or infringements of patents or services described herein. Nor does CrystalFontz America, Inc. warrant or represent that any license, either express or implied, is granted under any patent right, copyright, or other intellectual property right of CrystalFontz America, Inc. covering or relating to any combination, machine, or process in which our products or services might be or are used.

All specifications in datasheets on our website are, to the best of our knowledge, accurate but not guaranteed. Corrections to specifications are made as any inaccuracies are discovered.

Company and product names mentioned in this publication are trademarks or registered trademarks of their respective owners.

Copyright © 2023 by CrystalFontz America, Inc., 12412 East Saltese Avenue, Spokane Valley, WA 99216 U.S.A.



## 2. Module Description

This is a full color TFT graphic display module with a white LED backlight. This display includes a resistive touchscreen. This display has a built-in Sitronix ST7789V controller. Please see the [Sitronix ST7789V datasheet](#) for further reference.

This display is also available with [no touchscreen \(CFAF240320A0-024SN\)](#) or with a [capacitive touchscreen \(CFAF240320A0-024SC\)](#).

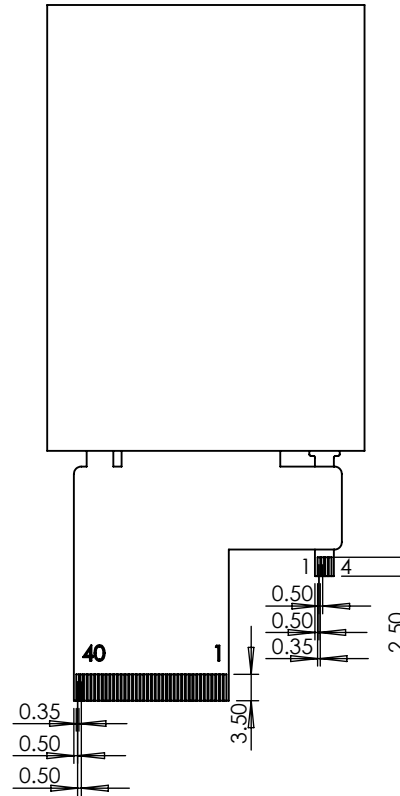
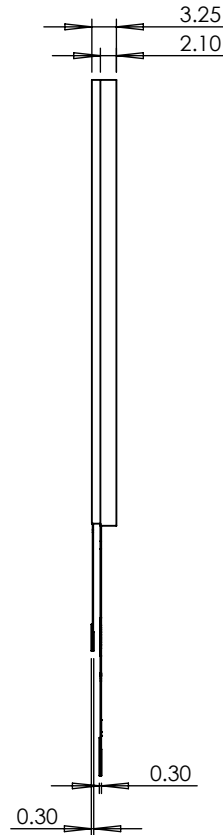
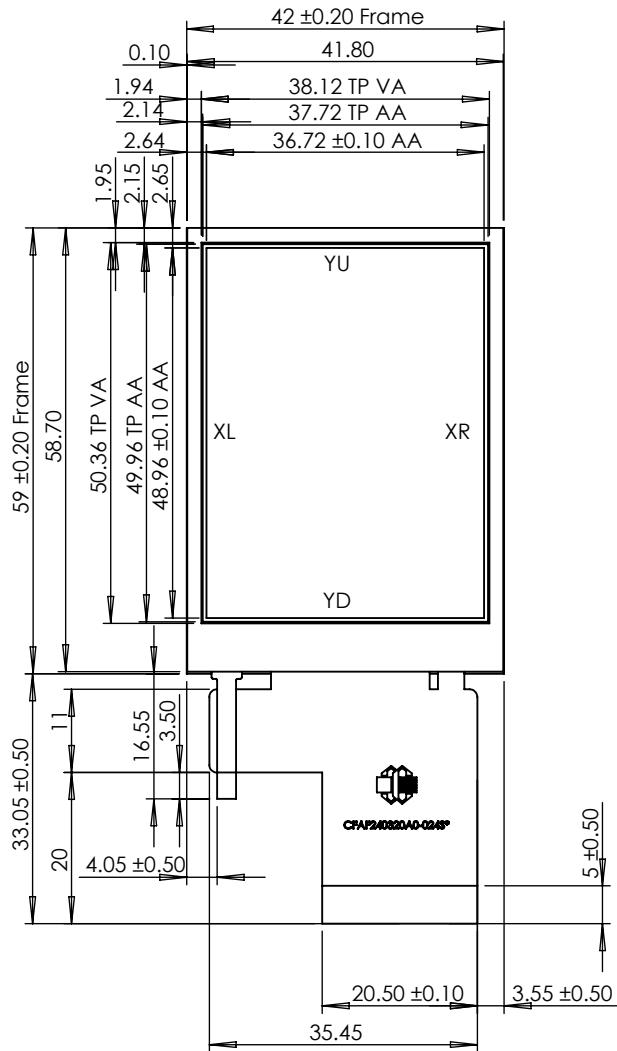
[Demo code for this display is available on Github](#). Additional resources can be found on [the product page](#).

## 3. Features

- 240\*320 Dot Matrix
- Viewing Direction: All
- Built-in Controller: Sitronix ST7789V (or equivalent)
- Operating Temperature: -20 - 70°C
- Storage Temperature: -30 - 80°C
- +3v Logic Power Supply
- 40mA, +9v Backlight Power Supply
- Interface: 8/9/16/18 bit parallel, RGB, 3- or 4-Wire SPI
- Resistive touch panel

## 4. Mechanical Data

Item	Specification (mm)	Specification (inch, reference)
Overall Width and Height	42.0 (W) x 59.0 (H) x 3.25 (D)	1.65 (W) x 2.32 (H) x 0.13 (D)
Active Area	36.72 (W) x 48.96 (H)	1.45 (W) x 1.93 (H)
Dot Pitch	0.153 (W) x 0.153 (H)	0.006 (W) x 0.006 (H)
Weight (Typical)	15.9 grams	0.56 ounces



Pin	Function
1	LEDA
2	LEDK
3	IOVCC
4	SDO
5	TE
6-23	DB17-DB0
24	SDA
25	GND
26	DOTCLK
27	GND
28	ENABLE
29	VSYNC
30	HSYNC
31	RD
32	WR
33	RS
34	CS
35	RESET
36-38	IM0-IM2
39	VCI
40	GND

Pin	Function
1	XL
2	YD
3	XR
4	YU

Display Controller	ST7789V
Brightness	680 nits
Viewing Direction	any
Operating Temperature	-20 to 70°C
Voltage Levels	logic: 3v backlight: 9v

Units: millimeters  
Tolerance: ±0.3



Crystalfontz

© 2023 Crystalfontz America, Inc.

Part Number:

CFAF240320A0-024SR

Date:

6/6/2023

Filename:

CFAF240320A0-024SR mm.pdf

Revision:

v1.0

Web:

www.crystalfontz.com/product/CFAF240320A0-024SR

Sheet:

1 of 1



## 6. Interface Pin Function

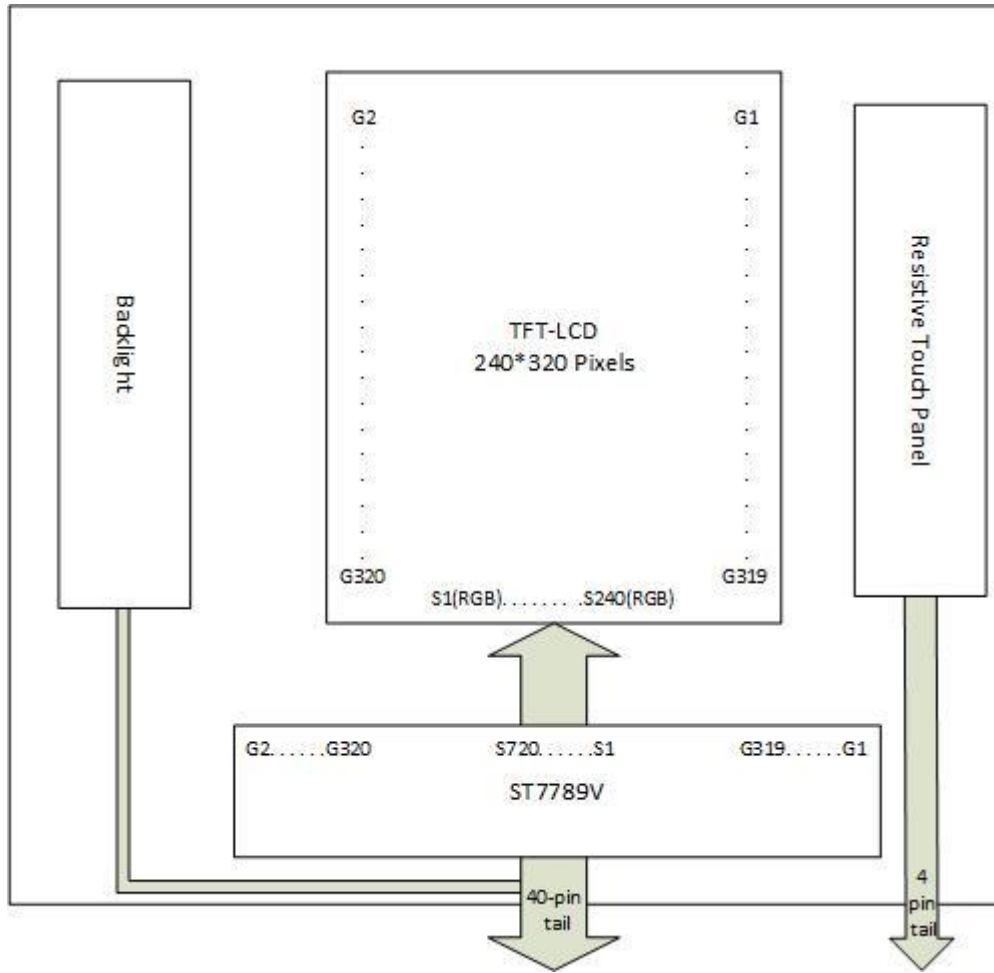
Pin No.	Symbol	SPI Interface	8080 Parallel Interface																								
1	LED_A	LED backlight power anode	LED backlight power anode																								
2	LED_K	LED backlight power cathode	LED backlight power cathode																								
3	V <sub>cc</sub>	Digital power supply	Digital power supply																								
4	SDO	Serial data output signal, data is output on falling edge of SCL	No Connection																								
5	TE	Tearing effect output pin, no connection if not used	Tearing effect output pin, no connection if not used																								
6-23	DB17-0	Fix low	<table border="1"> <thead> <tr> <th>16-bit</th> <th>8-bit</th> <th>18-bit</th> <th>9-bit</th> </tr> </thead> <tbody> <tr> <td>DB[17:10]</td> <td>DB[17:10]</td> <td>DB[17:0]</td> <td>DB[17:9]</td> </tr> <tr> <td>DB[8:1]</td> <td></td> <td></td> <td></td> </tr> </tbody> </table>	16-bit	8-bit	18-bit	9-bit	DB[17:10]	DB[17:10]	DB[17:0]	DB[17:9]	DB[8:1]															
			16-bit	8-bit	18-bit	9-bit																					
DB[17:10]	DB[17:10]	DB[17:0]	DB[17:9]																								
DB[8:1]																											
			Note: Data bus Pin 6 is DB17 through to Pin 23 being DB0																								
24	SDA	Serial data input signal. Data is latched on falling edge of SCL	No Connection																								
25	GND	Ground	Ground																								
26	DOTCLK	Dot clock signal for RGB interface, fix low	Dot clock signal for RGB interface, fix low																								
27	GND	Ground	Ground																								
28	ENABLE	Data enable for RGB interface	Data enable for RGB interface																								
29	VSYNC	Vertical synchronizing input for RGB interface, fix low if not used	Vertical synchronizing input for RGB interface, fix low if not used																								
30	HSYNC	Horizontal synchronizing input for RGB interface, fix low if not used	Horizontal synchronizing input for RGB interface, fix low if not used																								
31	RD	Fix low	Read enable																								
32	WR	Display D/C selection pin for 4-Wire, fix low if not used	Write enable																								
33	RS	SCL – Serial interface clock	Register Select: This pin toggles between the data and command registers																								
34	CS	Chip select signal- low enable, high disable	Chip select signal- low enable, high disable																								
35	RESET	Reset signal, active low	Reset signal, active low																								
36	IM0	<table border="1"> <thead> <tr> <th>3-Wire</th> <th>4-Wire</th> </tr> </thead> <tbody> <tr> <td>1</td> <td>0</td> </tr> <tr> <td>0</td> <td>1</td> </tr> <tr> <td>1</td> <td>1</td> </tr> </tbody> </table>	3-Wire	4-Wire	1	0	0	1	1	1	<table border="1"> <thead> <tr> <th>16-bit</th> <th>8-bit</th> <th>18-bit</th> <th>9-bit</th> </tr> </thead> <tbody> <tr> <td>0</td> <td>1</td> <td>0</td> <td>1</td> </tr> <tr> <td>0</td> <td>0</td> <td>1</td> <td>1</td> </tr> <tr> <td>0</td> <td>0</td> <td>0</td> <td>0</td> </tr> </tbody> </table>	16-bit	8-bit	18-bit	9-bit	0	1	0	1	0	0	1	1	0	0	0	0
3-Wire	4-Wire																										
1	0																										
0	1																										
1	1																										
16-bit	8-bit	18-bit	9-bit																								
0	1	0	1																								
0	0	1	1																								
0	0	0	0																								
37	IM1																										
38	IM2																										
39	V <sub>Cl</sub>	Analog power supply	Analog power supply																								
40	GND	Ground	Ground																								

Pin No.	Symbol	Touch Panel Interface Pins
1	XL	Touch panel left
2	YD	Touch panel down
3	XR	Touch panel right
4	YU	Touch panel up

Note that the main tail and the touch tail are numbered in opposite directions. Pin numbers are marked on the tails.



## 7. System Block Diagram



## 8. Absolute Maximum Ratings

Parameter	Symbol	Min	Max	Unit
Supply Voltage	$V_{CI}$	-0.3	4.6	V
Supply Voltage for Logic	$V_{CC}$	-0.3	4.6	V
Logic Input Voltage	$V_{IN}$	0.5	$V_{CC}+0.5$	V
Operating Temperature	$T_{OP}$	-20	+70	°C
Storage Temperature	$T_{STG}$	-30	+80	°C

*Note: These are stress ratings only. Extended exposure to the absolute maximum ratings listed above may affect device reliability or cause permanent damage. Functional operation should be restricted to the limits in the Electrical Characteristics table below.*

## 9. Electrical Characteristics

Item	Symbol	Condition	Min	Typ	Max	Unit
Display Supply Voltage for Logic	V <sub>Cl</sub>	-	2.6	3.3	3.3	V
Display Supply Voltage for I/O	V <sub>CC</sub>	-	1.65	3.3	3.3	V
Display High-level Input	V <sub>IH</sub>	-	0.7 x V <sub>CC</sub>	-	V <sub>CC</sub>	V
Display Low-level Input	V <sub>IL</sub>	-	V <sub>SS</sub>	-	0.3 x V <sub>CC</sub>	V
Display Power Supply Current for LCM	I <sub>CC</sub>	V <sub>Cl</sub> = 2.8V	-	9	13.5	mA

## 10. Optical Characteristics

Item	Symbol	Condition	Typ	Unit
View Angle	(V) $\theta$	CR $\geq$ 10	160	deg
	(H) $\phi$		160	deg
Contrast Ratio	CR	Normal Viewing Angle Dark Room	800:1	-
Response Time	T <sub>Rise</sub> +T <sub>Fall</sub>	Dark Room 30 min. warm-up time	35	ms
Transmittance (with PL)	T		4.65	%

## 11. LED Backlight

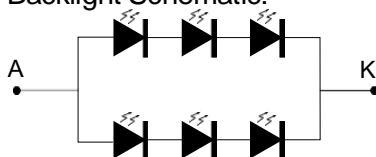
### 11.1. LED Backlight Characteristics

Item	Condition	Symbol	Min	Typ	Max	Unit
Forward Current	I <sub>F</sub> =40mA	I <sub>F</sub>	-	40	-	mA
Forward Voltage		V <sub>F</sub>	8.1	9.0	9.9	V
Luminous Intensity for LCM		I <sub>V</sub>	560	680	-	cd/m <sup>2</sup>
Uniformity for LCM		-	70	-	-	%
LED Lifetime		-	20K	-	-	Hours
Color	White					

*Notes:*

- (1) Supply current minimum value is only for reference since the LED brightness efficiency keeps enhancing. Current consumption becomes less and less to achieve the same luminance.
- (2) Lifetime is defined as the amount of time when the luminance has decayed to <50% of the initial value (20K hours is an estimate for reference only).

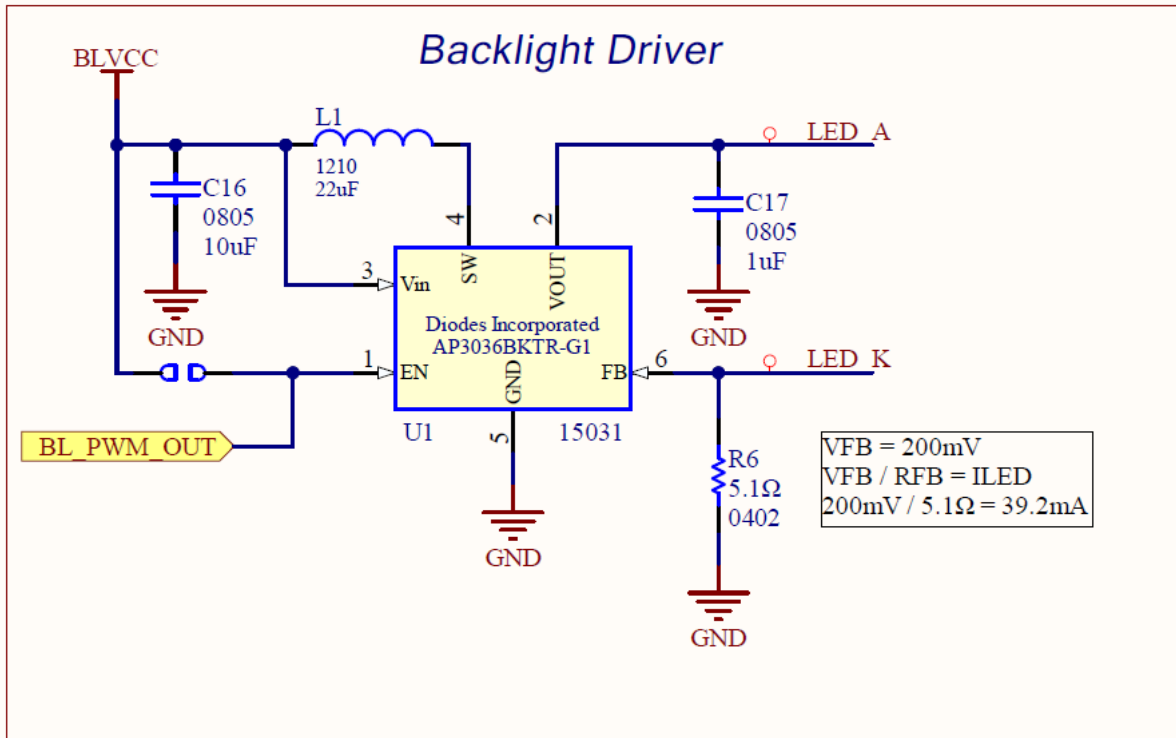
**Backlight Schematic:**







### 11.2. LED Backlight Example Driver





## 12. LCD Module Precautions

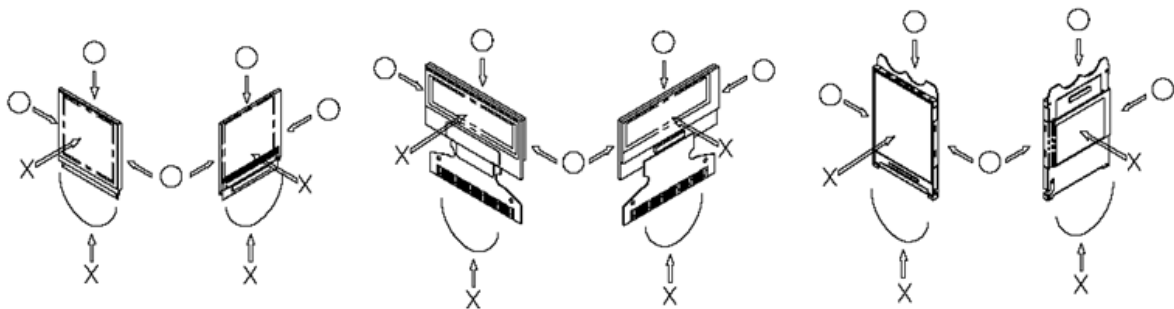
These precautions help ensure personal safety, module performance, and compliance of environmental regulations when using an LCD module.

### 12.1. Modules

- Avoid excessive physical and electrical shocks to module.
- Do not drop, bend, or twist the LCD display module.
- Do not make extra holes, modify the shape, or change the components of the printed circuit board.
- Do not disassemble the LCD display module.
- Do not operate the LCD display module outside the absolute maximum rating.
- Only solder to the I/O terminals.
- Store in an anti-static electricity container and clean environment.
- Do not display static information for long periods of time to avoid burn in.
- Crystalfontz has the right to change passive components on the display module. Resistors, capacitors and other passive components may have different appearance and color.
- Crystalfontz has the right to change the PCB revision/version in order to satisfy the supply stability, management optimization, the best product performance, etc., under the premise of not affecting the electrical characteristics and external dimensions.

### 12.2. Handling Precautions

- The display panel is made of glass. Do not apply mechanical impacts, stress or pressure to the LCD display module.
- Pressure applied to or near the display surface may damage the cell structure.
- If the display panel is accidentally broken and the internal organic substance leaks out, do not inhale or touch the organic substance.
- The polarizer covering the surface of the LCD display module is soft and can be easily scratched. Cover the polarizer in the final design.
- Clean the surface of the polarizer using Scotch Mending Tape No. 810 or an equivalent
  - Never breathe on the surface or wipe the surface using a cloth containing solvent such as ethyl alcohol, as the surface of the polarizer will become cloudy.
  - Water, ketone, and aromatic solvents may ruin the polarizer.
- Do not over bend the film with electrode pattern layouts. This can effect the display performance.



- Do not apply stress to the LSI chips and the surrounding molded sections.
- Do not apply input signals while the logic power is off.
- Prevent damage by electrostatic discharge (ESD) when handling the LCD display module:
  - Ground personnel handling LCD display modules.
  - Ground tools used for assembly such as soldering irons.
  - To suppress generation of ESD, avoid carrying out assembly work under dry environments.
  - Remove the protective film applied to the display panel slowly as ESD may be generated when removing the film.
- Protective film is applied to the surface of the display panel. Remove the film before assembly. If the LCD display module has been stored for a long period of time, residue adhesive material of the protection film may remain on the surface of the display panel after the film has been removed. In such a case, remove the residue material as discussed above.

### 12.3. Storing Precautions

- Store the LCD display modules in ESD preventative bags. Avoid exposure to direct sunlight and fluorescent lamps. Avoid high temperature and high humidity environments and low temperature (less



than 0°C) environments. We recommend storing these modules in the packaged state in which they were shipped from Crystalfontz.

- Do not let water drops or dew adhere to the packages or bags.
- If electric current is applied when water is on the surface of the LCD display module, the module may become dewed. If a dewed LCD display module is placed under high humidity environments the electrodes may become corroded.

#### 12.4. Designing Precautions

- The absolute maximum ratings cannot be exceeded for LCD display module. If these values are exceeded, panel damage may happen.
- Satisfy the VIL and VIH specifications and, ensure the signal line cable is as short as possible to avoid signal noise.
- Install excess current preventative unit (fuses, etc.) to the power circuit. Recommend value: 0.5A
- Avoid occurrence of mutual noise interference with the neighboring devices.
- When fastening the LCD display module, fasten the external plastic housing section.  
If the power supply to the LCD display module is forcibly shut down, by such errors as taking out the main battery while the LCD display panel is in operation, we cannot guarantee the quality of this LCD display module.
- Connection (contact) to any other potential than the above may lead to rupture of the IC.

#### 12.5. Disposing Precautions

- Request qualified companies handle the industrial waste when disposing of the LCD display modules. Observe all relevant laws and regulations.

#### 12.6. Other Precautions

- When an LCD display module is operated for a long period of time with a fixed pattern, the fixed pattern may remain as an after image or a slight contrast deviation may occur.
  - If the operation is interrupted and left unused for a while, normal state can be restored.
  - This will not cause a problem in the reliability of the module.
- To protect the LCD display module from performance drops by static electricity rapture, etc., do not touch the following sections whenever possible while handling the LCD display modules.
  - Pins and electrodes
  - Pattern layouts such as the TCP & FPC
- With this LCD display module, the LCD driver is exposed. If this LCD driver is exposed to light, malfunctioning may occur. Design the product and installation method so that the LCD driver may be shielded from light in actual usage and during the inspection processes.
- Although this LCD display module stores the operation state data by the commands and the indication data, when excessive external noise, etc. enters into the module, the internal status may be changed. Therefore, it is necessary to take appropriate measures to suppress noise generation or to protect from influences of noise on the system design.
- Periodically refresh the operation statuses in the software (reset the commands and retransfer the display data), to cope with catastrophic noise.
- Resistors, capacitors, and other passive components will have different appearance and color caused by the different supplier.
- Crystalfontz has the right to upgrade and modify the product function.
- The limitation of FPC bending:

